



Ending Homelessness

Offering **Innovative**
Mental Health **Alternatives**

FY22 Requests

\$289,000 **Support Line 24/7**

\$2.5 million **End Chronic Homelessness**



The logo for PathwaysVermont features a stylized key icon where the head of the key is a circle and the shaft is a vertical line that curves to the right, ending in a small heart shape.

PathwaysVermont

- *First Rural Housing First*
- Established **2010**
- **100+** staff
- *Only Soteria House in USA*
- *People Serving People*

Housing First Ending Homelessness



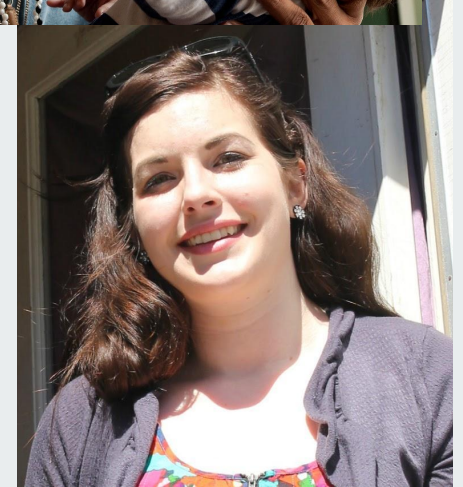
Serious Problem, Simple Solution

Housing First:

- Evidence-Based Practice
- **Housing** without *preconditions*
- First *rural* in the **world**
- **500+** households served
- Housing retention > **85%**
- *Limited* service area
- Funded by *Department of Mental Health, Department of Corrections* and grants



- Serving the Most Vulnerable
 - **Serious Challenges:** *Mental Health, Substance Use*
 - *Chronic Homelessness*
 - **Rejected** from Other Services
 - Extensive *Institutionalization*
- Support Services
 - *Intensive*
 - *Individualized*
 - *Home-Based*

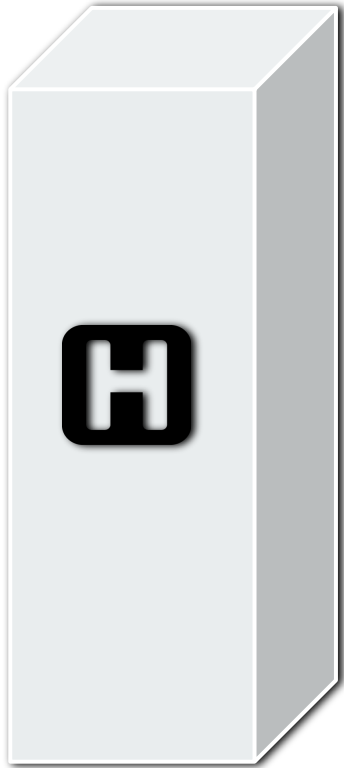


Charlie's **Story**

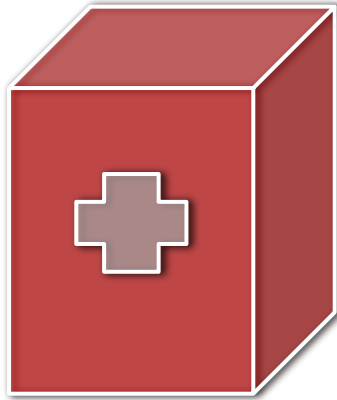
“Pathways Vermont saved my life. If the organization wasn’t here, I would not be here.”



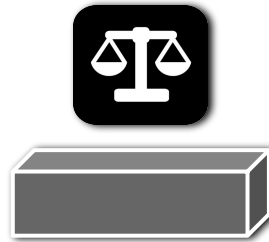
Housing First is **Cost-Effective**



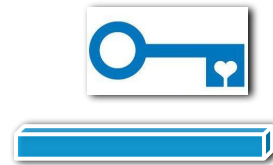
psychiatric
hospital (~\$2000)



emergency
room (~\$800)



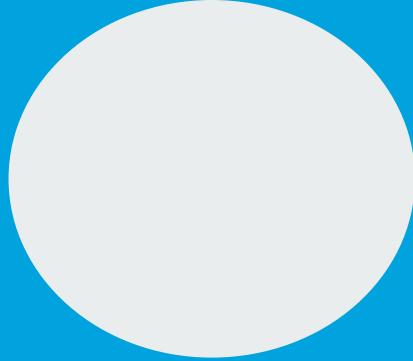
correctional
facility (~\$140)



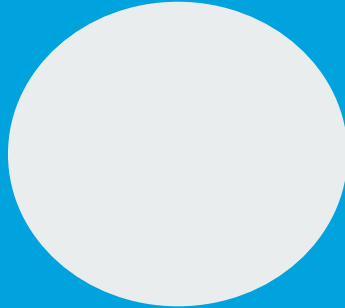
Housing
First (~\$43)

6 Months **Before** *Housing First*:

Psychiatric
Hospitalization
\$1,038,000



CORRECTIONAL
FACILITY
\$726,652



MOTELS
\$151,094



6 Months **After** *Housing First*:

Psychiatric
Hospitalization
\$1,500



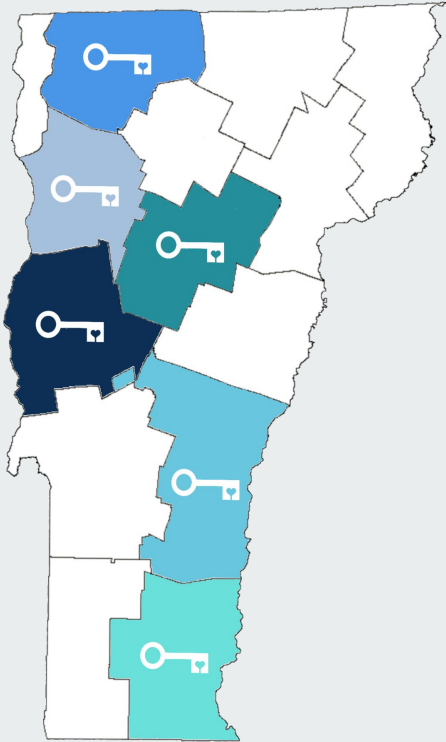
CORRECTIONAL
FACILITY
\$218,6190



MOTELS
\$47,2440

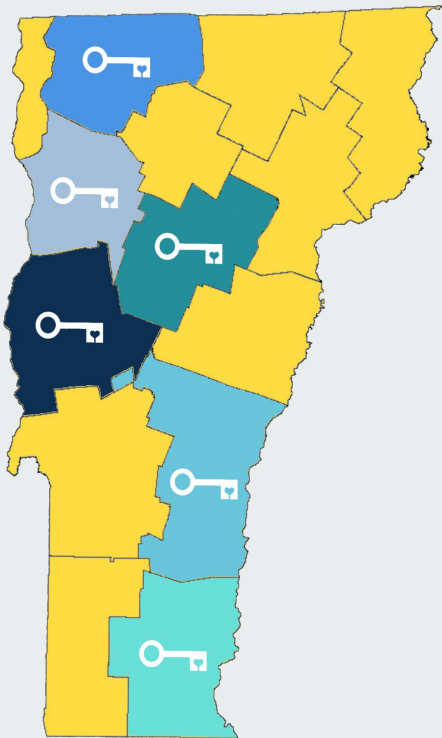


*Ending Homelessness for **All** Vermonters?*



- Only in **6** Counties
- Not based on **need**
 - High needs, under-served
- *Knowledge, Skills, Interest* in **Statewide Service**

*End Homelessness for **All** Vermonters*



- Expansion
 - **All 14** counties
 - *End Chronic Homelessness*
- **Double** service capacity
- \$2.5 Million
- *Annual Savings: \$4 million+*

Thank You!

Hilary Melton

hilary@pathwaysvermont.org

Rebeka Lawrence-Gomez

rebeka@pathwaysvermont.org